



409 Easton Road, Suite 101
Willow Grove, PA 19090
www.quakercityauction.com

PRESORTED
FIRST-CLASS
U.S. POSTAGE
PAID
Permit # 2010
Bellmawr NJ

... Auctioneers | Appraisers | Liquidators

License #AU001769L

FABRICATION, SHEET METAL, MECHANICAL CONTRACTING & GLASS EQUIPMENT ONLINE AUCTION 1843 Fairview Avenue, Willow Grove, PA



RICO (OMEGA) HGR410 CNC HYDRAULIC
SQUARING SHEAR

SALE:

Thursday, June 9th at 9:00 am
through Wednesday, June 15th
at 12:00 noon

INSPECTION:

Thursday, June 9th from 9:00 am
to 2:00 pm

BID ONLINE AT
BidSpotter.com

QUAKER CITY AUCTIONEERS' FABRICATION, SHEET METAL, MECHANICAL CONTRACTING & GLASS EQUIPMENT ONLINE AUCTION



NIAGARA HD-350-10-14 HYDRAULIC PRESS
BRAKE WITH CNC BACKGAGE



Dodge Ram Pro Master 2500 Hi-Roof
Cargo Van

**Includes: 2016 Hydraulic
Shear, Hydraulic Brake,
Saws, Welders, Glass
Equipment, Drills, Material
Handling, Contractor
Equipment & Tools,
Warehouse, Support
and more!**

**1843 Fairview Avenue,
Willow Grove, PA 19090**

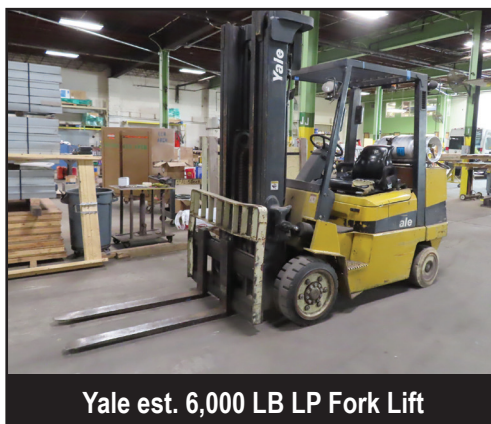
June 9th – 15th on BidSpotter.com

Inspection: Thursday, June 9th
from 9:00 am to 2:00 pm

Bid online at BidSpotter.com



Scotchman SUP-600-NF
Non-Ferrous Mitering Cut-Off Saw



Yale est. 6,000 LB LP Fork Lift

QUAKER CITY AUCTIONEERS' FABRICATION, SHEET METAL, MECHANICAL CONTRACTING & GLASS EQUIPMENT ONLINE AUCTION

1843 FAIRVIEW AVENUE, WILLOW GROVE, PA

SALE BEGINS: Thursday, June 9th at 9:00 am and **CLOSES:** Wednesday, June 15th at 12 noon
Inspection - Thursday, June 9th from 9:00 am to 2:00 pm

HYDRAULIC SHEAR: 2016 RICO(OMEGA) HGR410 CNC Hydraulic Power Squaring Shear, S/N 2398, Max Cutting Cap. 10 mm, Stroke Length 4050 mm, CNC Touch Screen Control

HYDRAULIC PRESS BRAKES: NIAGARA HD-350-10-14 350 Ton Hydraulic Press Brake, AUTOMEC Autogauge CNC 99 Cackgage, 14' Overall, 126" B.H., NOTE: 24" in Pit

WELDERS: MILLER: 2020 DYNASTY 280 Tig w/ Coolmate 1.3 Water Cooler; 2019 CST 280 Stick/Tig; (2) MILLERMATIC 300 S/C Portable Migs; SYNCROWAVE 250 CC-AC/DC Tig w/ DYNAFLUS Cooler; REGENCY 250 CV-DC Power Supply; SPOOLMATIC 30A Wire Spool Gun LC022797; 2019 X-TREME XVS 12 VS Suitcase Voltage Sensing Wire Feeder; DELTAWELD 452 CV-DC Mobile Power Supply w/60 Series 24V Wire Feeder; MIDWEST CD100 & ERICO PW1000 Stud Welders; HYPERTHERM Powermax 300 Plasma Cutter; THERMAL ARC PAK 8XR Plasma Cutter; Welding Wire, Electrodes, Alloy Rods, Welding Supplies

DRILLS: WILTON 20" MDL. 2550 HD, CLAUSING 1770 20" HD, ROCKWELL 70-400 20" HD, POWERMATIC mdl. 1200 20" 3-Head HD, JET JDP-20VS-3 20" HD, WALKER-TURNER 15" 3-Head Pedestal, ROCKWELL 15-081 15" Bench Drill Press; SILVILNE GT2-223 & GT1-203 Speed Tapping Machines

SAWS: 2015 SCOTCHMAN SUP-600-NF HD Mitering Cut-Off; MARVEL Series 8 MARK II Tilt Head Vertical Band; SAFETY SPEED C5 Portable Panel; GENERAL 350 Tilting Arbor Table; JET HBS 1018W Horizontal Band; TOPS Retracto-Glide 45389MG 18" Radial Arm w/ UNIST Micro-Fluidization Sprayer; DEWALT DWS780 12" Sliding Compound & RIDGID R4112 10" Miter; KALAMAZOO 14" Cut-Off

MISCELLANEOUS MACHINES: DIACRO No. 1 Hand Notcher; PEXTO 6" Bench Shear; BALDOR 33b Dbl-End Polishing Unit; CONQUEST 20 Arch 20" Disc Sander; HEINRICH mdl-6 Deep Throat Bench Hand Punch; 125" w/4'x8' Table & G & P GPMC6264-5 Stroke Sanders, 30x94 Table, PENN STATE INQ DC-4 Dust Collector

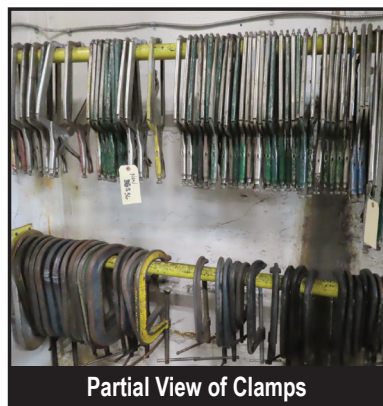
MATERIAL HANDLING: YALE (est>) 6,000 LB LP 3-Stage Fork Lift w/ Fork Positioner; MITSUBISHI FGC25 LP Solid Tire Fork Lift, 5000 LBS Cap., Side Shifter; ; 90" & 48" & SS Fork Extensions; SUMNER 2520 Portable Crank Lift w/Outriggers, 800 LBS Cap., 20.8' Lift Ht., Counterweight Stack; (5) SKARNES M-6 ROL-A-LIFTS 3000 LBS. Cap. Per Unit; (2) WESCO RNR-4 ROL-A-LIFT-Type Movers 4000 LBS Cap. Per Unit; U-LINE Scissor Lift Tables; HAULMASTER 2-Ton Manual Chain Hoist; Canvas Slings; Scrap Bins; THERM 5124 Portable Davit Crane 2000LBS Cap., with DURA-HOIST; COFFING 2-Ton Electric Chain Hoist; 1000 LB. Electric Builder's Hoist; SOMACHA (SUMMERS & MACHA) 1000 LB. Shop Hoist w/ROWEX Extension; 8' Spreader Beam, Self-Dumping Hoppers; Propane Cages; Short Telescoping Jib Attachment; Telescoping Adjustable Jib Attachment; NESTAFLEX 226 Flexible Portable Skate Conveyors, Large Removable Post Steel Dollies; Panel Carts, Hydraulic Pallet Jacks(1 w/7' Forks); Mobile Iron Tables; (4) WOODS POWR Grip 4' & 6' Vacuum Lifts

WAREHOUSE/SUPPORT: LADDERS: (3) LOUISVILLE 32', LOUISVILLE & WERNER 28' (2) WERNER 20' Fiberglass Extension; Permanent Magnetic Lifts; SOLAR 40/20/2 AMP Charger 250/200 AMP Starter; Steel Strapping Dispensers; Steel Horses, (3) (GLOBAL) EDSAL SC450F-P Flammable Liquid Cabs (Very Clean); Deep Pocket Supply Cabinet w/Parts Bins; GENERAL MINI-ROOTER XP Power Snake

TOOLS: KNAACK 109 Jobmaster Cabinet; JANCY ENG USA 5000 Magnetic Rotobroach Drill, Rotobroach Cutters; MILWAUKEE 4202 Magnetic Drill; HILTI: DD ST 150-U-CTL Core Drill Stand w/PRA72, DD 150-U & DD EC-1 Hand-Held Core Drills, DD-WMS 100 Water Management System, DX460 Powder Actuated Fastening Tool, (2)PM-40-MG Lasers; Concrete Drill Bits; (75+)C-Clamps up to 12"; BESSEY SQ L-Shaped Clamps up to 12"; BESSEY Clamps to 36"; (100) VISE Grips Assorted; IRWIN Quick-Grip Clamps; WETZLER Deep Throat Clamps; Bar Clamps; KLETT Saws; PORTER-CABLE 150 Port. Air Compressor; Safety Harnesses, Tie Down Ratchets; Hand Riveters, Hardware, Fasteners, Abrasive Sanding Belts, Wheels, Discs, Paper; HOPPER & SONS Pipe Bender; SUPREME Versatapper; CLARKE 10 Gallon & ALC F-150DM 40004 Abrasive Sand Blast Pots; (NEW) CENTRAL PNEUMATIC 40 LB. Abrasive Sand Blast Pot; Twin Vertical Air Clamps, Chip Conveyor, Gravity Roller In/Out Feeds; DUO-FAST & BOSTITCH Nailers & Staples; BLACK & DECKER Die Grinder & MACHO II HD Rotary Hammer; KOBALT, I-R & CHICAGO Air Chisels HILTI, RED HEAD & DEWALT Fasteners, Power Bolts, Anchors & more; UNITED Industrial #49 Porta-Power Set; LOOS & CO. Portable Hydraulic Crimping System; LEILA RUGBY 200 Digital Laser & NIKIN AC-2SAuto Auto Levels; BOSCH Electrical Routers, Grinders, Drills, Saws, MILWAUKEE 6370 8" Metal Circular Saw & Straight Grinders, CHERRY 5' Scaffolding Frames, Braces, Rails, Jacks, Aluminum Frame Planks Platforms to 12', Angle Arms; Slings, Truck Ratchet Straps; Plunger Cans;

GLASS: CR LAURENCE TLK5 Taper-Loc Installation Removal 1/2"-3/4" Glass; CR LAURENCE USW10 CR LAURENCE Railing Dry Glaze Taper-Loc X-System TLK-12; CRL SRS1 Glass Scratch Removal System; (3) ALBION AT-LINE AT400; CRL Horseshoe Shims & Rubber Setting Blocks; (4) CRL W6450 Wood's Power Grip 10" Metal Vacuum Cups for Curved Glass; Glazing Tape

Bid online at **BidSpotter.com**



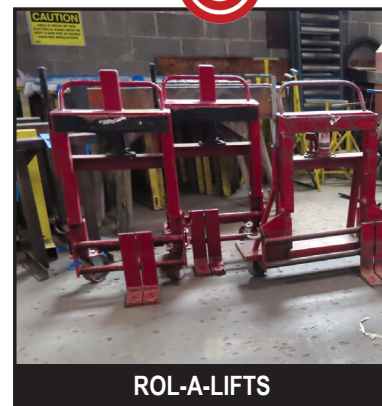
Partial View of Clamps



Marvel Series 8 Mark II Tilt Head Vertical Band Saw



2020 Miller Dynasty 280 Welder Partial View of Welders & Plasma Cutters



ROL-A-LIFTS

TERMS: 18% Buyers Premium plus 6% PA State Sales Tax, unless exempt. Payment in cash, bank check, business check with bank letter of guarantee if new to QCA within 48 hours of receipt of invoice. Removal begins June 16th.



409 Easton Road, Suite 101
 Willow Grove, PA 19090
 Phone 215.426.5300
 Fax 215.426.6897
 www.quakercityauction.com



... Auctioneers | Appraisers | Liquidators